



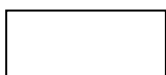
Chambers Process Flows

This document provides process flows for the common processes you will follow when submitting bills.

This includes:

- An Overview of Billing
- Accessing CCMS
- Requesting Access to a Case
- Searching for a Case
- Creating a POA
- Creating a FAS Bill
- Creating a Non FAS Bill
- Appeal Bills
- Adjustment Bills
- Managing Actions and Notifications
- Evidence Requests

Key

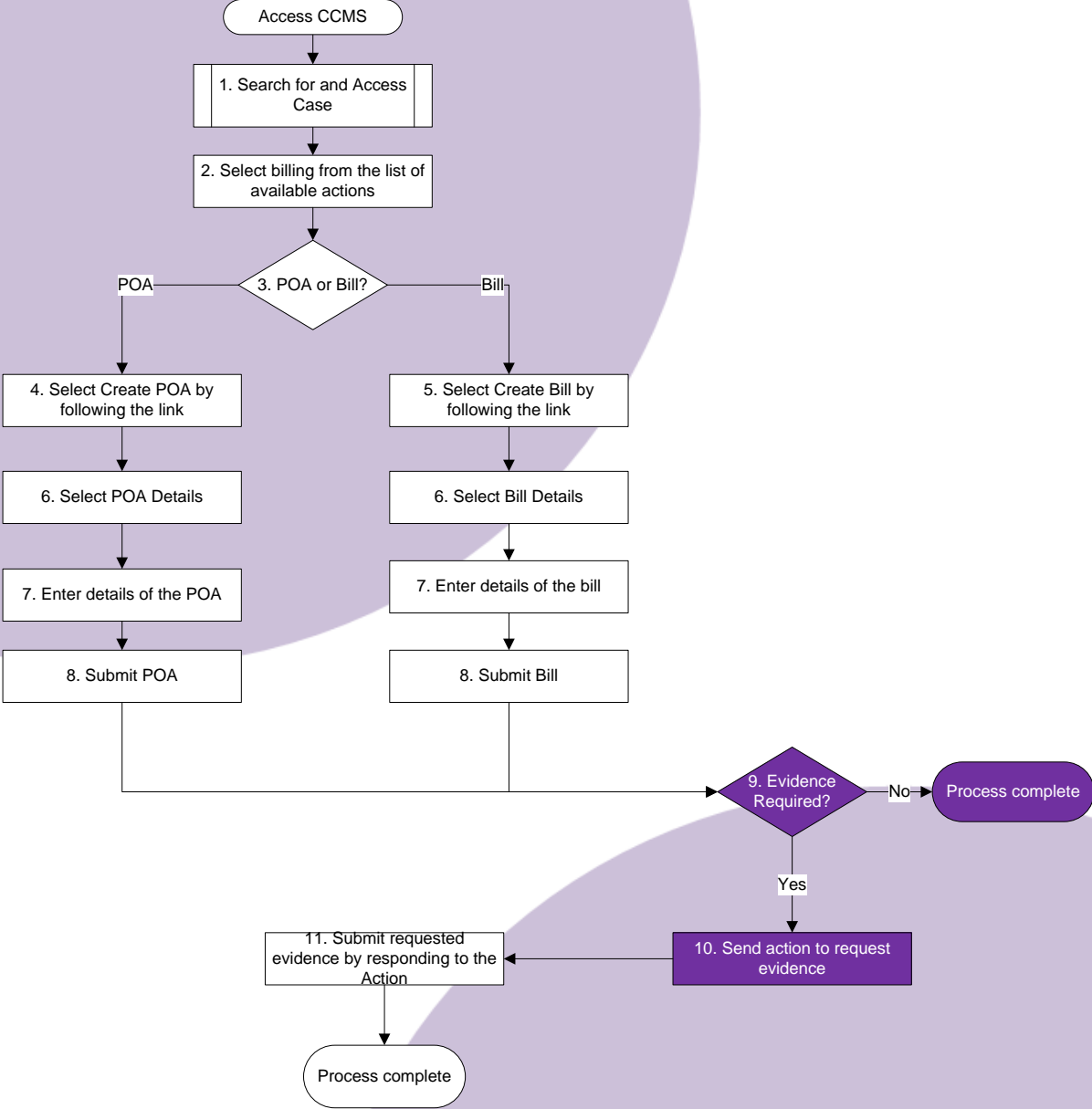


Process step completed by a user in
Chambers

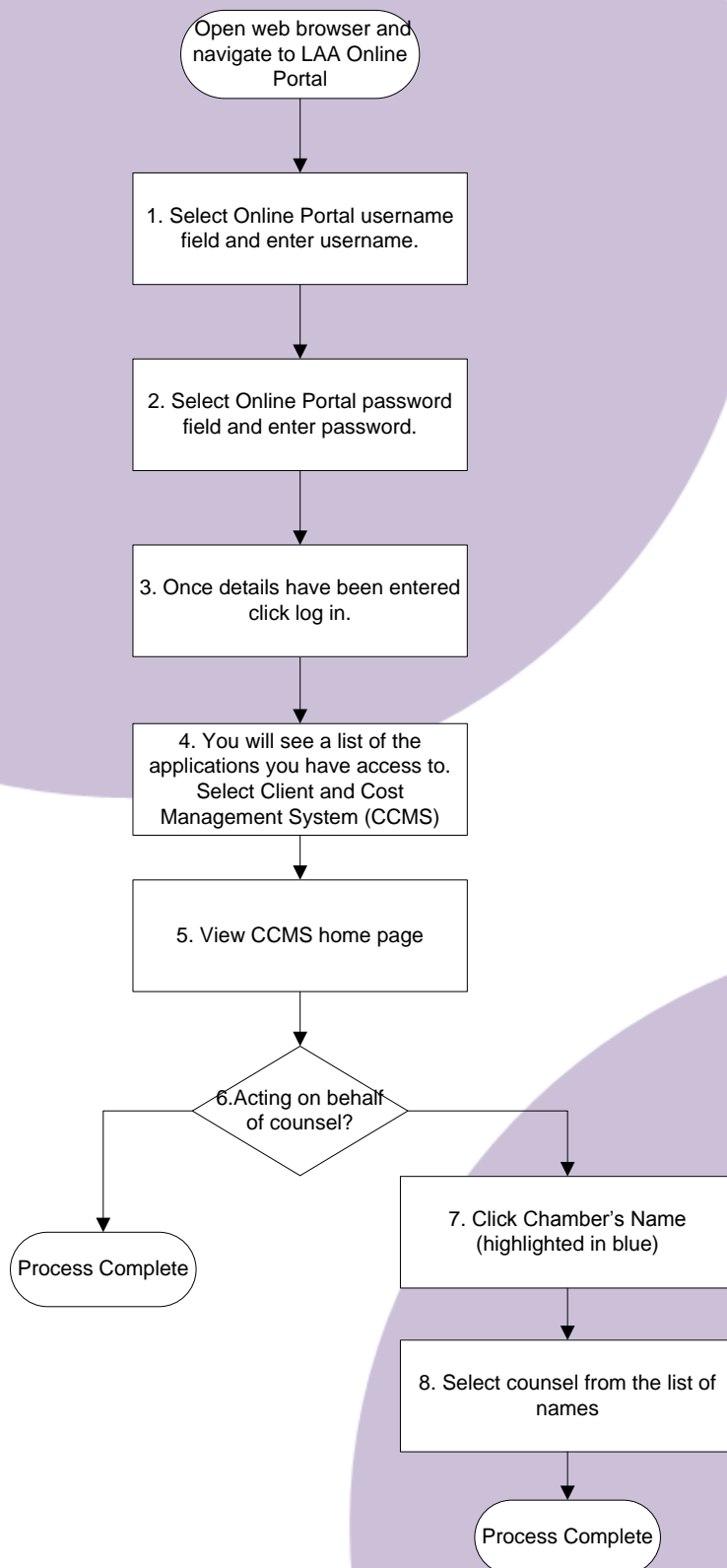


Process step completed by the LAA

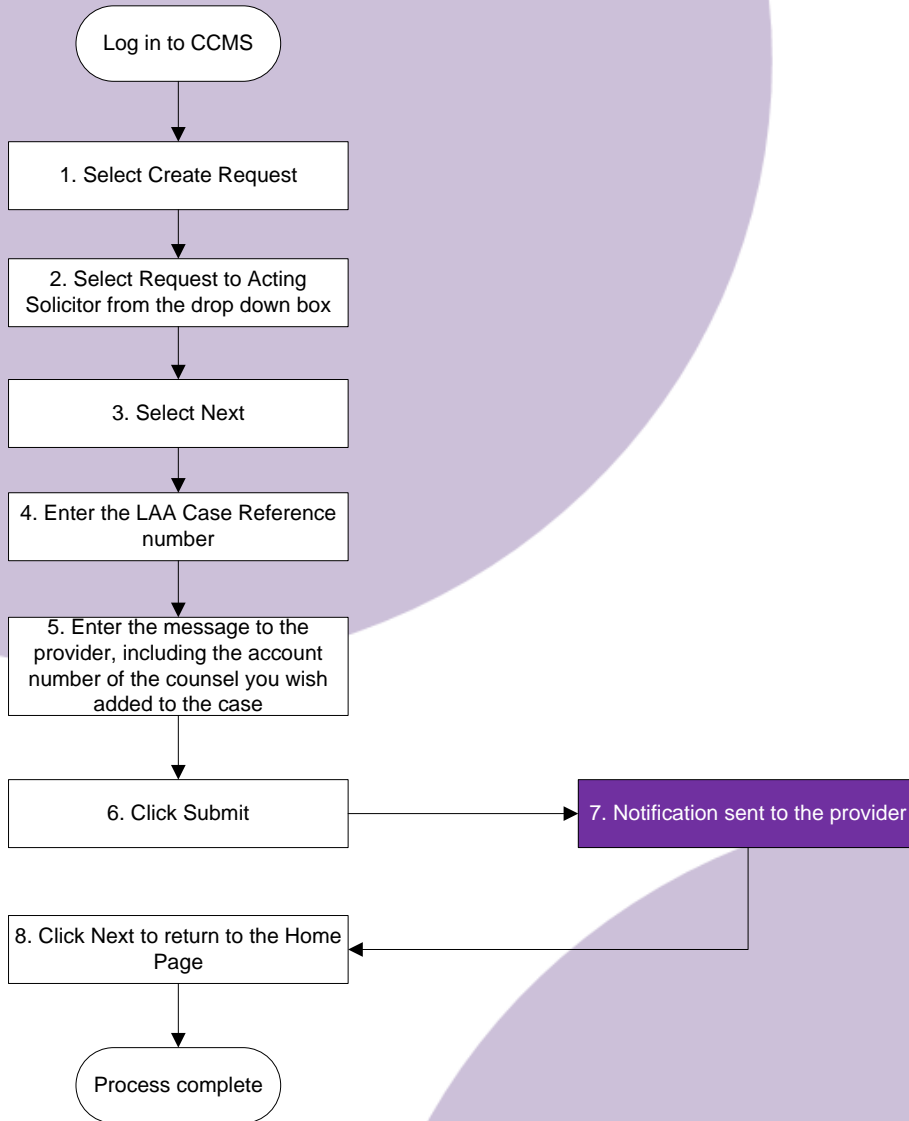
Billing Overview



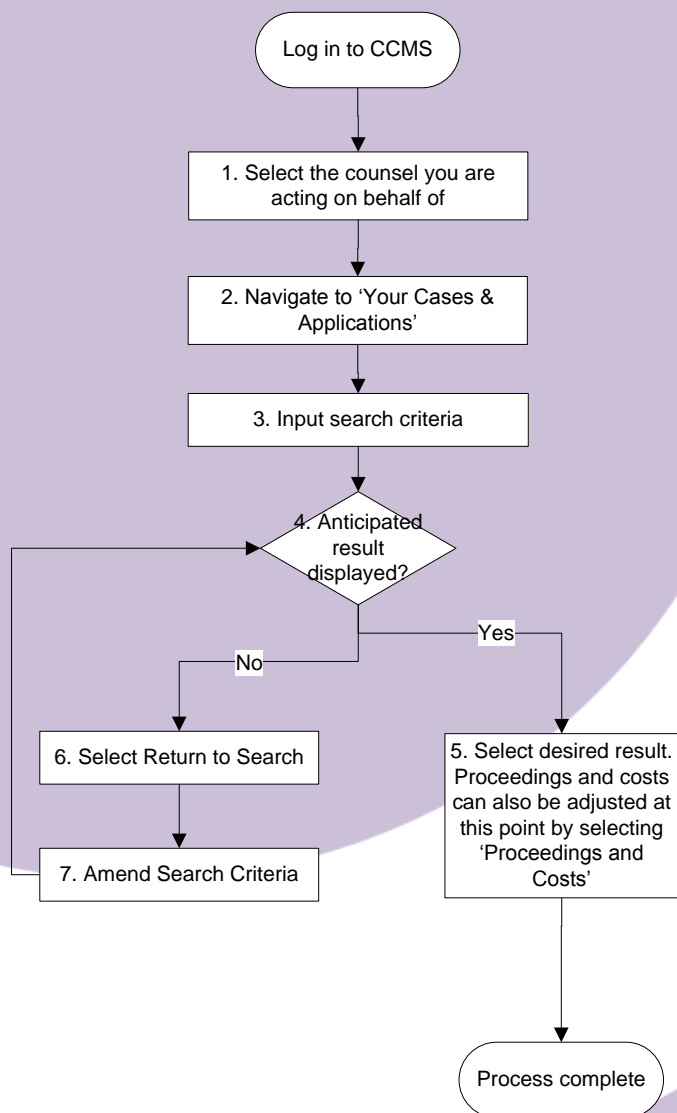
Accessing CCMS



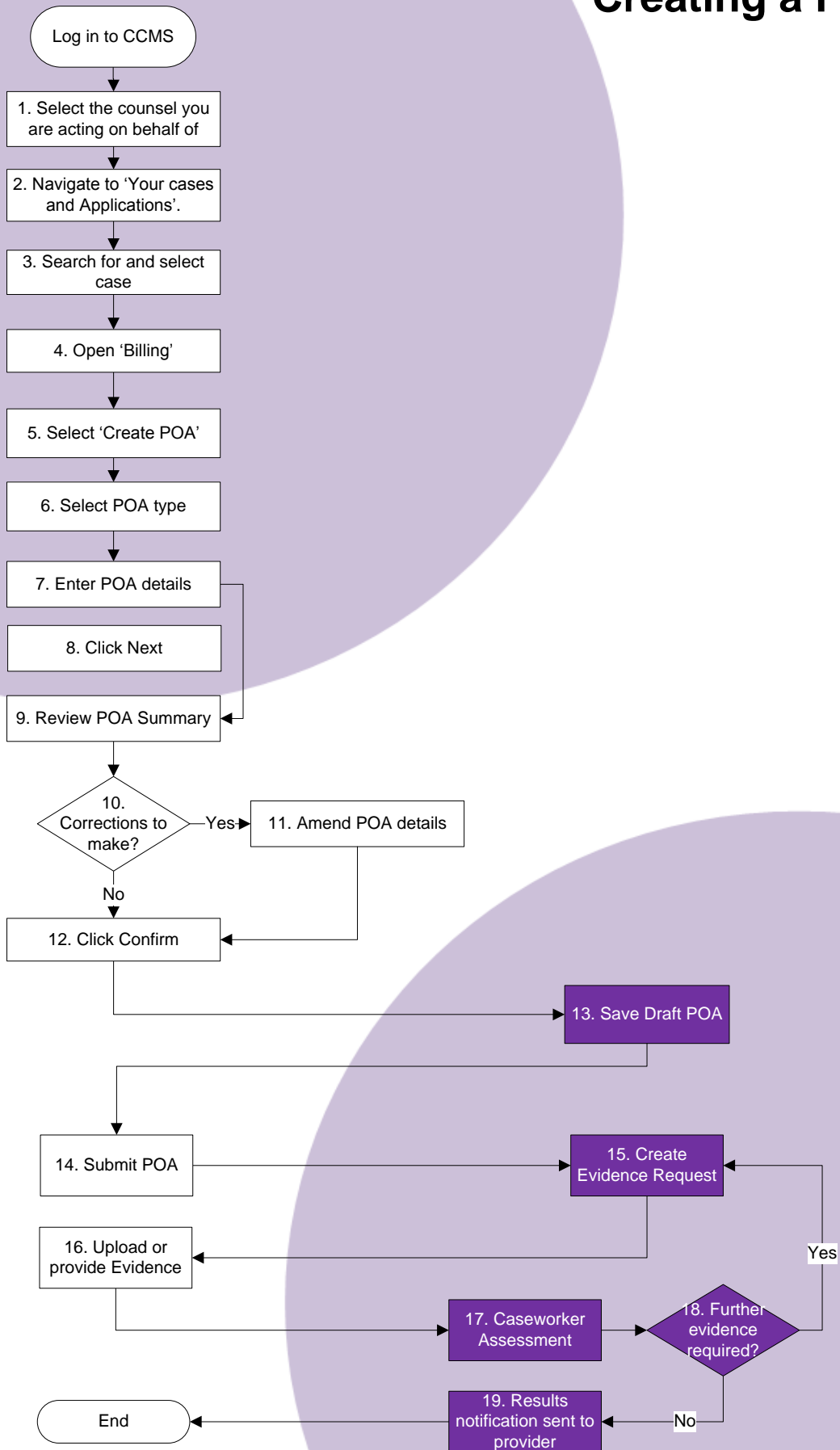
Requesting Access to a Case



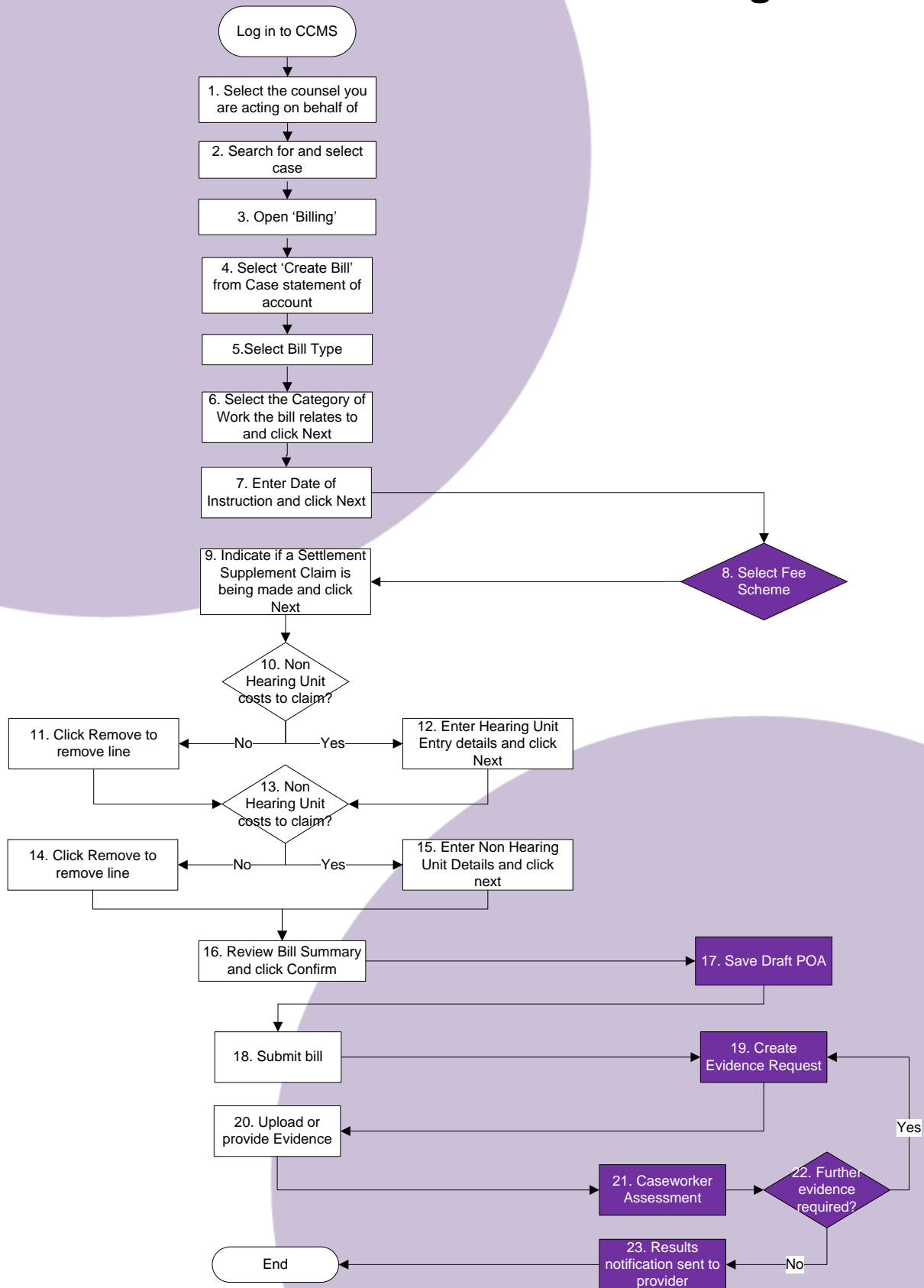
Searching for a Case



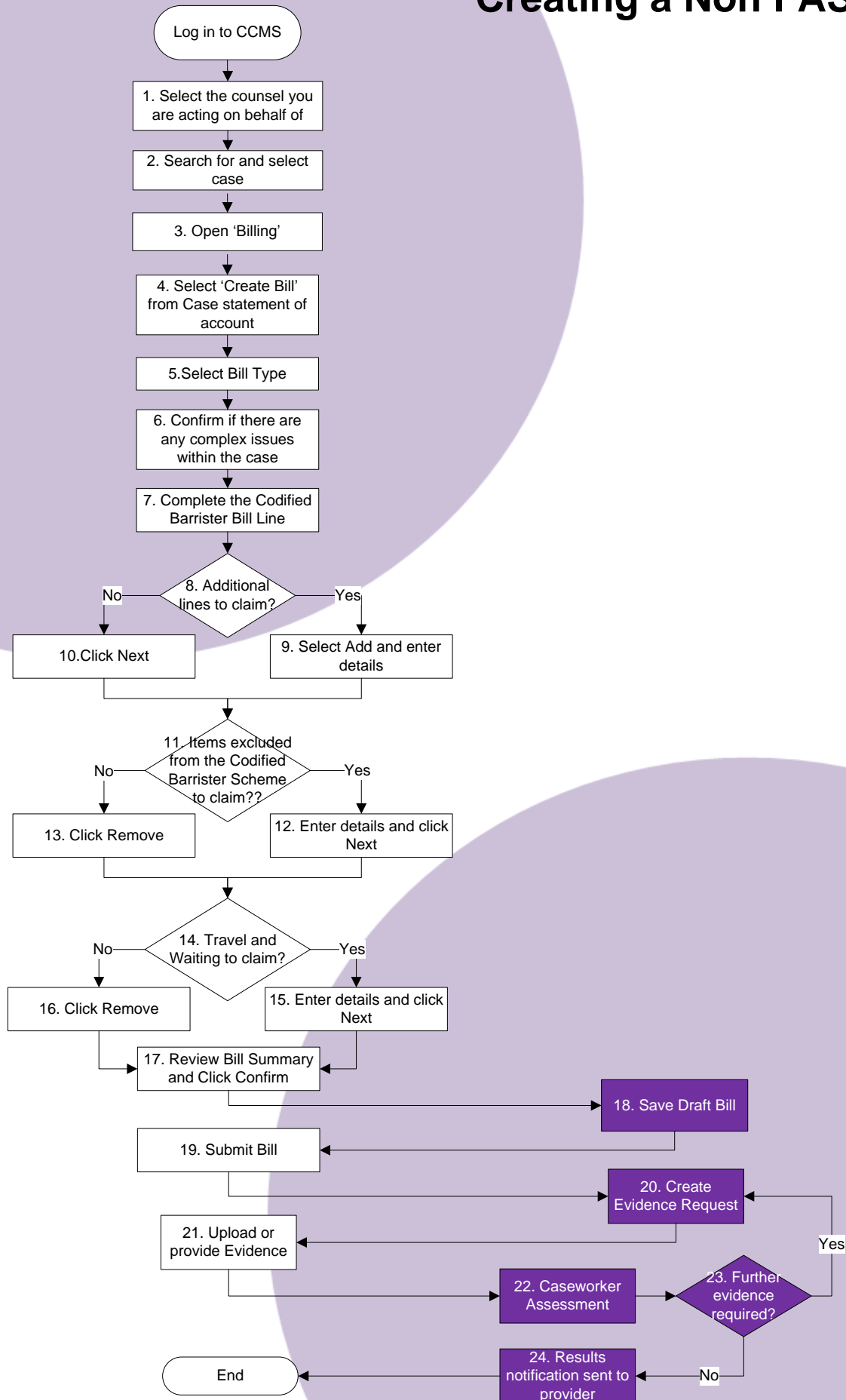
Creating a POA



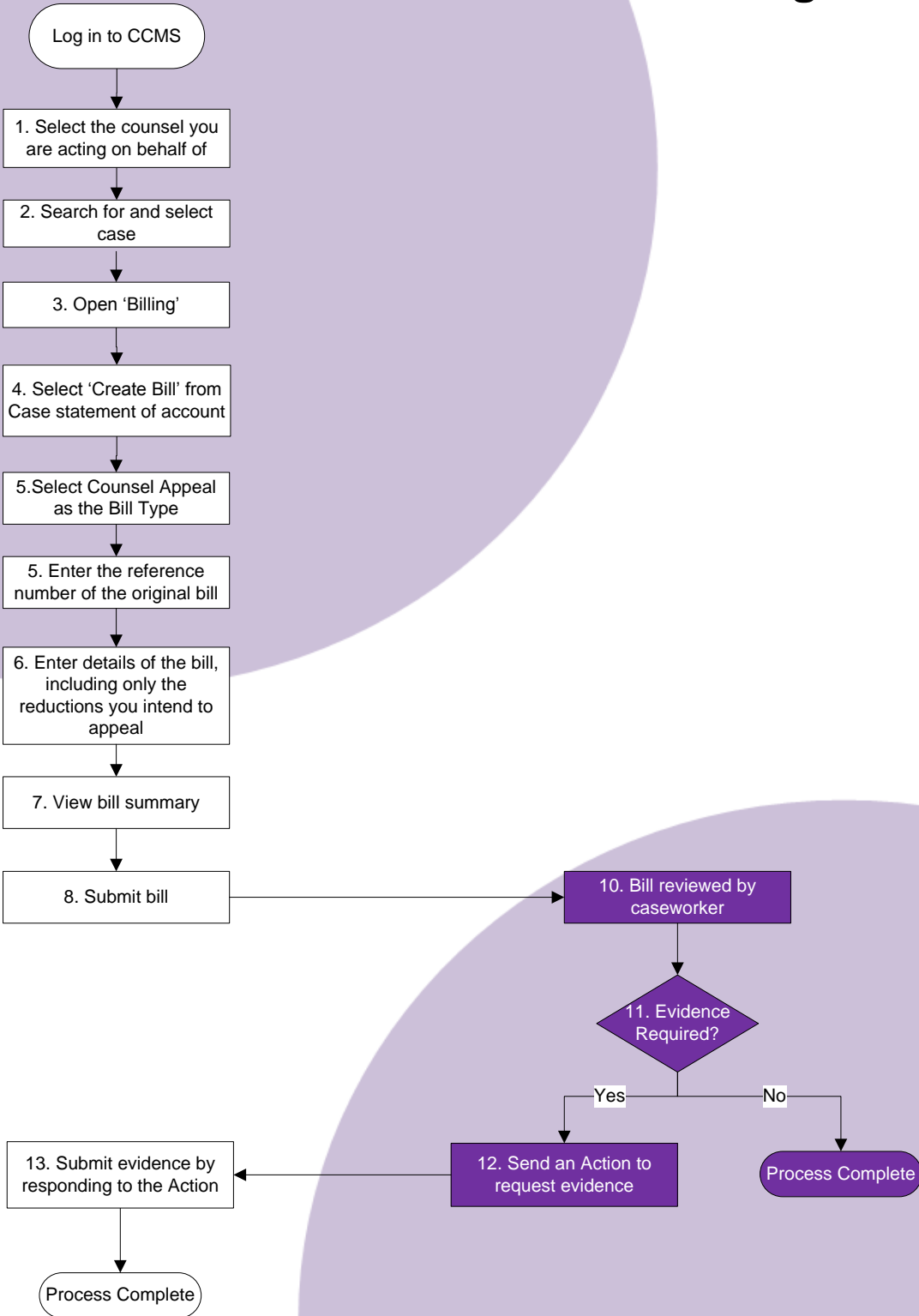
Creating a FAS Bill



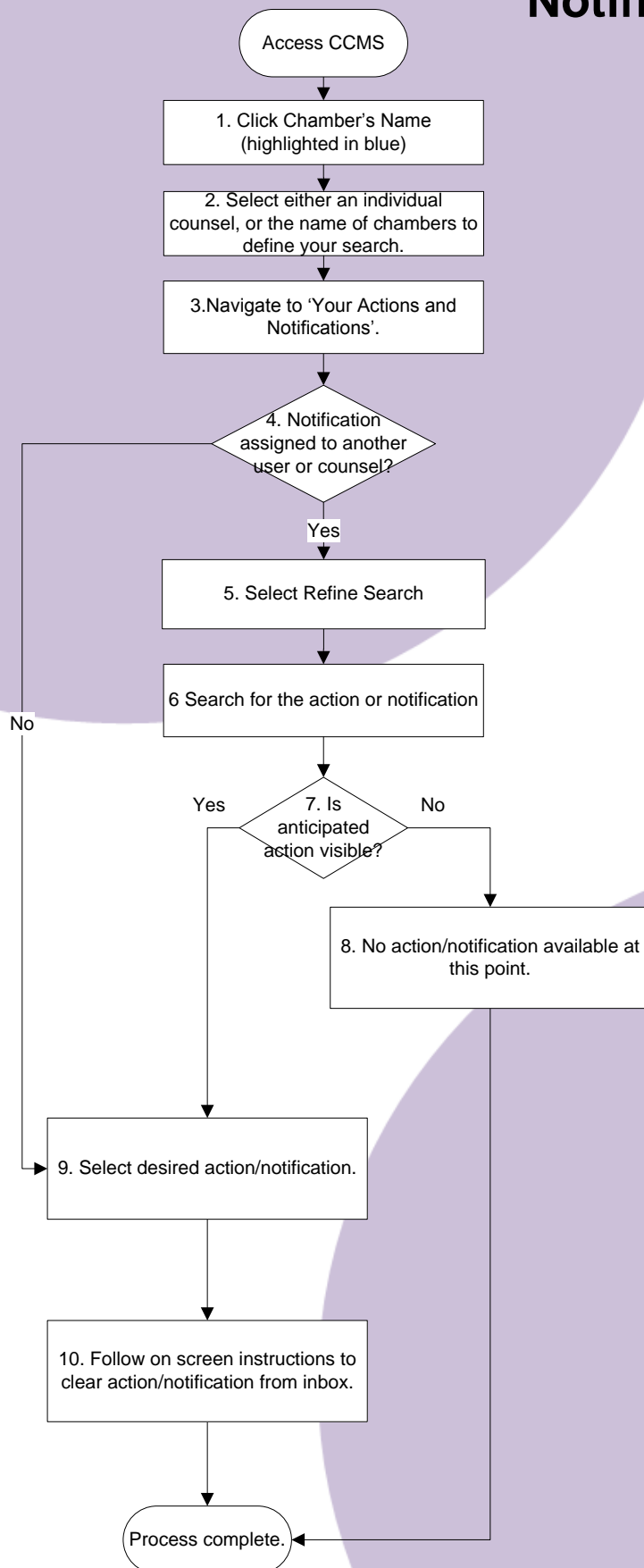
Creating a Non FAS Bill



Creating an Appeal Bill



Managing Actions and Notifications



Evidence Requests

